



**Celox spol. s r.o.**  
Družstevná 33/A, 900 23 Viničné,  
Tel.: +421 33 647 6573

**www.celox.sk, celox@celox.sk**

## DECLARATION OF PERFORMANCE N.74

**Product type:** Balcony profile MAXI

**(1) Product identification code:** Product group 39

**(2) Serial number:** 3952xx

**(3) Intended use:** Gutter profile made of aluminium serves to drain water from balconies and terraces.

**(4) Manufacturer:** Celox spol. s r. o., Záhradná 583/52, 900 23 Viničné

### **Declaration:**

We hereby declare that there is no harmonized standard for this product group and therefore it is not subject to the CE standard.

**(9) Declared performances:** The performance of the product is specified in the technical data sheet which forms an integral part of this declaration.

This declaration is issued under the sole responsibility of the manufacturer referred to in point (4).

Ivan Fischer  
Director general

Viničné, 1. 7. 2018

# TECHNICAL DATA SHEET OF THE PRODUCT

## Balcony profile MAXI

### Use

Is a finishing profile with a gutter (40 mm overhang) for laying on a prepared gradient coating. The height of the finishing edge is 9 mm. We get a clean and perfect ending of the tiles by using a closed edge. It is suitable for constructional structures with one or two component elastic waterproofing or with a separator film CS.

### Characteristics

- Leak tightness in drip areas
- Perfect water drainage from the tiles
- Resistance to corrosion and weather
- Simple and fast assemblage Aesthetic
- The profile is classified in a certified system

### Technical parameters

Length: 2,5 m

Colour: natural, elox silver, brown, grey

RAL colour: according to Qualicoate certificate

Material: Al, thickness 1,3 mm

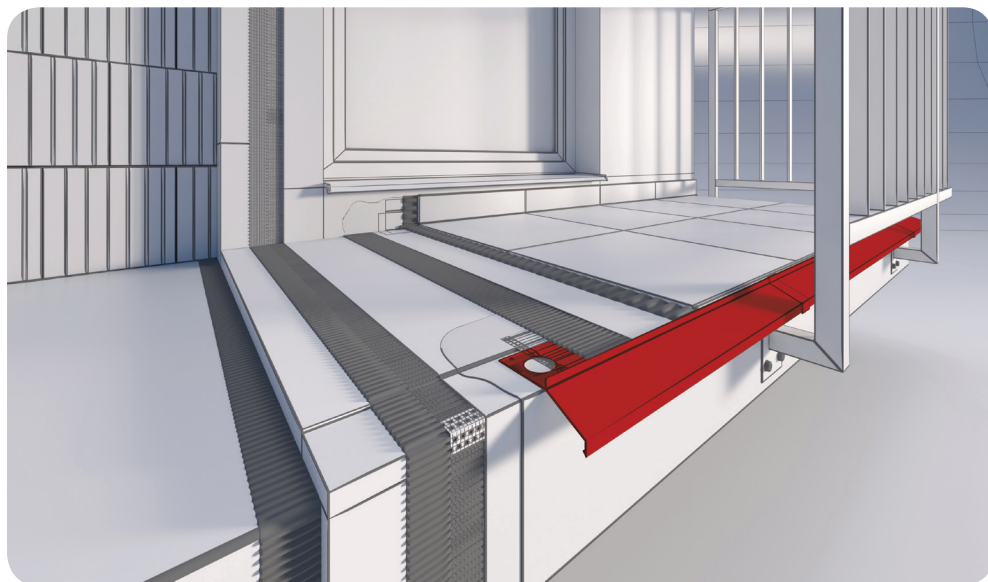
Overhang: 40 mm

Pointing: Polymer-based cement (TKK MS)

Packaging: carton 25 pcs, pack 5 pcs

### Type of underlay

Cement and other underlying layer, which have the appropriate stiffness and loading capacity. Or wedge plates EPS.



## Preparation of the base

The base must be load-bearing, flat and free of impurities. The cement underlying layers must be cured, matured with duly dilatation. Along the balcony edge, lowering of approx. 3 mm must be made so its surface will be at the same level as the base surface after the profile assemblage. Lowering can be made as follows:

1. In case, that the cement underlying layer is fresh - by immersing an assembly template into fresh mortar.
2. In case, that underlying mortar is stiff - by laying the assembly template to the base area and evening up the upper area by levelling mortar.
3. A groove cut into the wedge EPS

## Tools

Folding ruler or measuring tape, aluminium cutting saw knife, mixer or low-speed electric drill, stainless steel smoothing trowel, painters' brush, mason spatula or trowel, steel notched trowel ( 4 mm). It is permissible to use hand or mechanical saws for aluminium cutting. It is not permissible to cut profiles with tools, which cause thermal effects (rapid temperature increase). Angle grinder for example.

## Conditions of implementation

The assemblage of profiles needs to be performed under conditions appropriate for insulation and assembly materials, such as sealing mortar, mechanical or chemical joints, other materials and in accordance with technical data sheets of these materials.

## Installation

- 1 Spread the first layer of two component highly flexible waterproofing on the prepared surface by a steel trowel.
- 2 Seal the point of contact between floor and wall with a constantly flexible waterproof tape, which will be put into the waterproofing layer and push it thoroughly with a trowel.
- 3 Spread a thin waterproofing layer to the balcony edges within the balcony profile width. The balcony profile based on aluminium with the anodised surface will be laid into it. Start installation with angle brackets. After setting their position, mark the place of mechanical fixation, drill holes, insert the plastic part of a rawlplug, then mount the angle brackets in order to measure out other sections of the straight profiles. Straight sections need to be measured in a way, that dilatation gaps with a width of approximately 3 to 5 mm between the profiles and solid elements of the building remain on its joints. Be aware of the proper and straight laying of the corner profiles. Screw the screws anchored in rawlplugs after sealing mortar is hardened.
- 4 Cover the aluminium balcony profile with butyl tape.
- 5 Fix the connectors horizontally from below the profile at the dilatation gaps level (profiles and corner profiles joints). Spread the second waterproofing layer to the underlay and wall. Waterproof tape and aluminium profile will be covered by it.
- 6 When using a system with separation matting after the waterproofing gets dried ( max. 24 h) Apply a thin layer of cement glue to the underlay using a steel notched trowel (4 mm) into which the separation matting is inserted.
- 7 By using a steel notched trowel (notch size depends on tiling type), apply cement glue to the separation matting, to which the tiles will be glued.
- 8 Glue shall be applied to the underlay as well as to the tiling or as the case may be you can use butter floating technique. Stabilize it and expel air by tapping it with a rubber hammer. Point the tiling 24 hours later.



**Celox spol. s r.o.**  
Družstevná 33/A, 900 23 Viničné,  
Tel.: +421 33 647 6573

**[www.celox.sk](http://www.celox.sk), [celox@celox.sk](mailto:celox@celox.sk)**

- 9 Apply filler with a rubber squeegee (rubbing it obliquely to gaps direction at an angle of 45°). Clean the area with a clean sponge after drying. Recommended gap width is 6 mm.
- 10 The joint between the aluminium gutter profile and tiling and between plinth and tiling shall be eventually filled with a polyurethane sealant or with a MS polymer-based sealant. Recommended gap width is 6 mm. It is suitable to use a sealing cord beneath the sealant. The gap between tiling and plinth should be 3 to 6 mm wide. Insert the dilatation cord into the gap and then fill free sections with the polyurethane sealant.
- 11 Remove the protective film after finishing the installation.  
In case of using another type of waterproofing, the connection of the profiles needs to be carried out in accordance with the specification of the given insulation type.

## **Corrosion resistance**

Aluminium reacts in the air with oxygen, and an extremely slight oxidic layer is created. Even though it is thick just a few hundredths of a micrometer, it provides perfect protection against corrosion because of its density. In the event of damage, it will be restored by itself. Anodic oxidation (anodising) increases the thickness of an oxide layer and thus improves corrosion protection. In the case of the anodised profiles and supplements (corners, angles) there may be a slight change of tone. In the welded area of the corner and angle profiles, there may be a tone change, which does not constitute a defect.

## **General installation instructions**

Wear goggles during the execution of the works. If the profiles get dirty during the installation, it is possible to clean the profile quickly using water. Dried profiles shall be cleaned using an appropriate cleaning agent which does not damage the varnished surface. Follow the instructions specified in product technical data sheets or other reference documents required by law and use materials appropriate for the balcony and terrace usage in respect of the use of other materials, especially sealing mortars, adhesive mortars, joints, reinforcing tapes, elastic seals and others. The manufacturer is not liable for the damages caused by the use of a product, which does not satisfy the product function or by using inappropriate accompanying materials and using inappropriate tools. Therefore, it is necessary to perform the works in accordance with the project, technical instructions, relevant standards, rules of building skill and safety and health legislation.

## **General operational instructions**

Clean the profiles at least twice a year. When cleaning, use clean water and a cloth, which does not scratch the surface. It is forbidden to use strongly acidic or strongly alkaline cleaning agents as well as surfactants, which could react with aluminium. It is forbidden to use organic solvents, containing esters, ketones, alcohol, aromatic compounds, glycol esters, chlorinated hydrocarbons etc. Surface must be immediately rinsed with clean cold water after each wash. It is forbidden to use salts and chemical agents for ice removal near the profiles. It is recommended to carry out technical check of balconies and terraces twice a year in order to check the technical condition of the individual elements. If shortcoming are detected, it is necessary to remedy them.

## **Transport and storage**

Transport in original carton packages, in a horizontal position. Prevent mechanical damage. Store in rooms that will protect them from fouling, deformation and scratches, in cartons of up to 10 layers.

## Transport and storage

Transport in original carton packages, in a horizontal position. Prevent mechanical damage. Store in rooms that will protect them from fouling, deformation and scratches, in cartons of up to 10 layers.

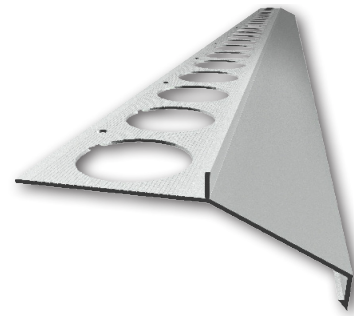
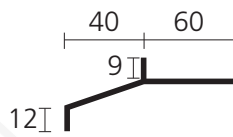
## Packaging

Gutter MAXI : length 2,5 lm, 25 pcs in carton packages

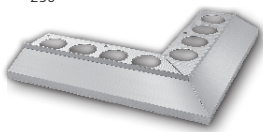
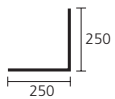
Corners, Angles: 10 pcs in carton packages

Connector: 5 pcs in carton packages

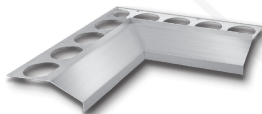
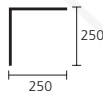
## Balcony profile MAXI dimensions



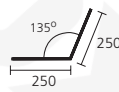
## Accessories



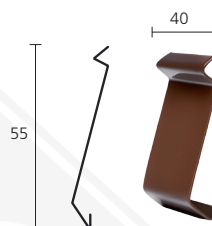
Roh - MAXI



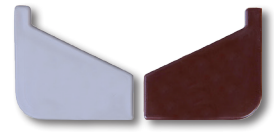
Kút - MAXI



Roh - MAXI 135°

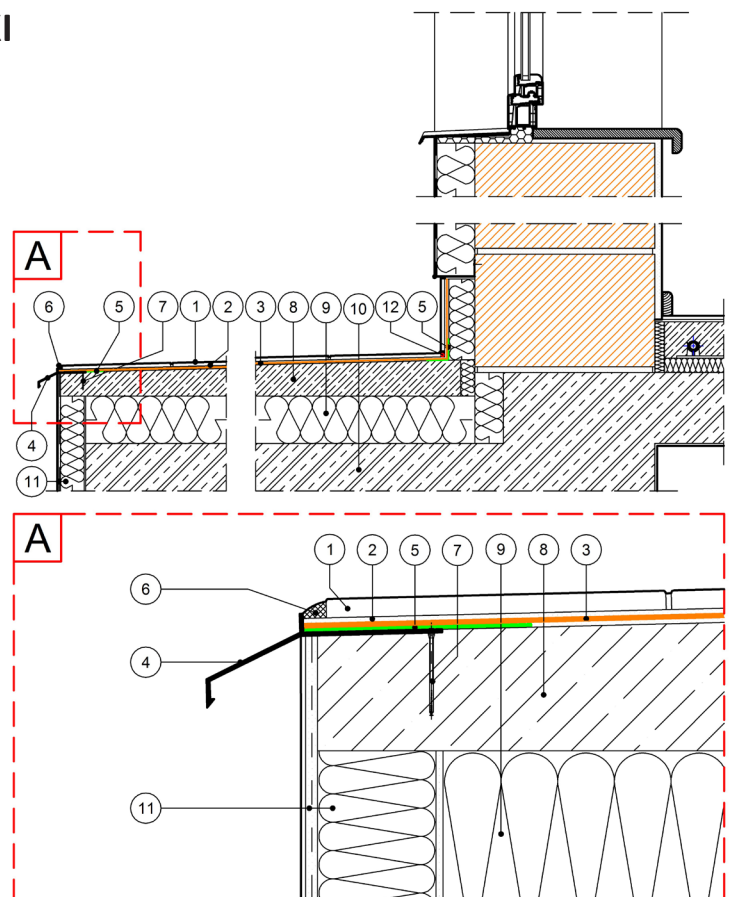


Spojka - MAXI



Krytka - UNIVERZAL

## Example of use Balcony profile - MAXI



- 1 - ceramic tiles
- 2 - elastic frost-proof adhesive mortar
- 3 - separator film CS or CI film
- 4 - balcony profile - MAXI
- 5 - butyl tape - special
- 6 - sealant
- 7 - fixing screw
- 8 - cement gradient coating
- 9 - thermal insulation
- 10 - balcony structure
- 11 - thermal insulation + plastering
- 12 - sealing polyurethane cord



**Celox spol. s r.o.**  
Družstevná 33/A, 900 23 Viničné,  
Tel.: +421 33 647 6573

**[www.celox.sk](http://www.celox.sk), [celox@celox.sk](mailto:celox@celox.sk)**

### **! ATTENTION:**

Since the release of this „Technical data sheet,“ the previous version becomes invalid.

The above information shall refer exclusively to the general conditions for the use of our products, and they are not a substitute for the technical project. In case of use in different conditions, the contractor is required to verify, if our products are suitable for use at these conditions.

In liaison with products of the company CELOX, we recommend to use materials of the verified manufacturers. Installation instructions are only indicative and may differ from the selected project as well as from the technology of a particular supplier of the entire system solution.

